



SwitchWeld™ welding and plasma cutting solutions



All-in-one



Versatile



Easy to Use



Portable

SwitchWeld Plus



- Get production started quickly - connect one 208-480v plug (1 phase/3 phase) "plug and play"
- No assembly required
- Full communication with Miller® Auto Deltaweld®

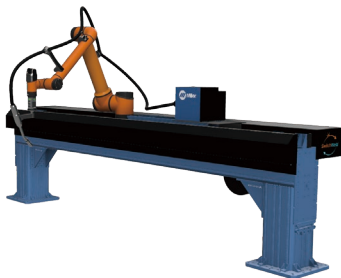
SwitchWeld Basic



- Customizable
- Mount it anywhere
- Economical - works with any welding power supply



SwitchWeld Reach



- Full communication with Miller® Auto Deltaweld®
- Bolt it anywhere in your shop
- Length customizable

SwitchWeld Plasma



- For plasma cutting
- Torch height controller included
- Easily import complex 2D geometries.



Key Welding Features



SwitchWeld Puck Simplifies Operation

It only takes three buttons to program an entire welding project with the SwitchWeld puck, and we've engineered the process to be hands-on, making it perfect for welders and operators with no training or cobot experience. Just drag the cobot using the free-drive system, record your welding points with the buttons on the face of the puck, and start welding.

Patented Joystick

Most cobot welding systems require jogging and extensive programming. Not ours. We've included an intuitive joystick for precise movement, allowing the operator to quickly translate or rotate the cobot and welding tool without touching the teach pendant. The Joystick enables accurate torch tip adjustments for more precise welds.



Simple and Friendly User Interface

The SwitchWeld UI was designed in a way that is intuitive and simple for anyone to understand – regardless of robotic experience or training. We've specifically designed this software with welders in mind. Putting everything you need to fine-tune your robotic welding settings at your fingertips, and minimizing software interaction.

ArcAdvisor Calculates Weld Settings To Produce Great Welds Quickly

ArcAdvisor™ calculates the best welding parameters for the welding job from an extensive tested database of hundreds of thousands of welding schedules and allows you to import them directly into your program. Weld Speed, Gas Flow, Voltage - all in a matter of Seconds.

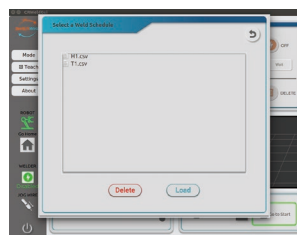
ArcAdvisor Prompts Users to Input Known Welding Parameters



ArcAdvisor Calculates Consistent Weld Settings



Save and import your own custom weld schedules



Available AUBO i-Series Cobots

AUBO i5



5kg Payload
625mm / 2'11" Reach
±0.02mm Repeatability

AUBO i10



10kg Payload
1350mm / 4'5" Reach
±0.03mm Repeatability

AUBO i20



20kg Payload
1650mm / 5'5" Reach
±0.1mm Repeatability

AUBO i20L



20kg Payload
2000mm / 6'7" Reach
±0.1mm Repeatability

Interested in a zero risk FREE demo/proof of concept at our Tennessee R&D center?
Give SwitchWeld welding experts a call or email today!



Check out SwitchWeld free training sessions on our website and register today!

SwitchWeld R&D Center:

699 East 15 Street, Cookeville, TN, 38501

Headquarters:

11701 Metro Airport Center Dr, STE110, Romulus, MI 48174



 (313)335-1788

 www.switchweld.com
<https://www.youtube.com/@aubousa/playlists>

 sales@switchweld.com